



FOAM STATION HARDWARE

Features

Completely self-contained unit

Operates with AFFF or Alcohol Type Concentrates (ATC™)

Operates with water only

Rechargeable while in operation

Storage reel for 38 mm X 30 m (1.5" X 100') (booster) non-collapsible hose

Description

The SOLBERG® Foam Station is a quick knock down, one-man operation foam station. The unit is self-contained, consisting of a 132 litre (35 gallon) stainless steel concentrate tank, eductor, handline nozzle and non-collapsible hose. When in operation, water is introduced from a dedicated water source through the supply hose to the eductor. While water is passing through the eductor a vacuum is created, which draws foam concentrate out of the tank, up to the eductor and into the water stream, delivering the foam solution.

Application

The SOLBERG Foam Station is designed to provide firefighting capabilities in various high-hazard high-risk applications such as:

- Aircraft hangars
- Off-shore platforms
- Dike areas
- Spill fires
- Tank farms

Specifications (standard unit)

- 25 mm (1.0") drain valve with plug
- 38 mm (1.5") 100' non-collapsible hose
- 102 mm (4.0") PVC fill port and vent
- Stainless steel handle
- 132 litres (35 gallon) stainless steel (304) concentrate tank
- Handline 360 lpm (95 gpm) Nozzle
- Brass eductor with 360 lpm (95 gpm)
- Brass manifold
- Galvanized hose reel
- Stainless steel pick up tube



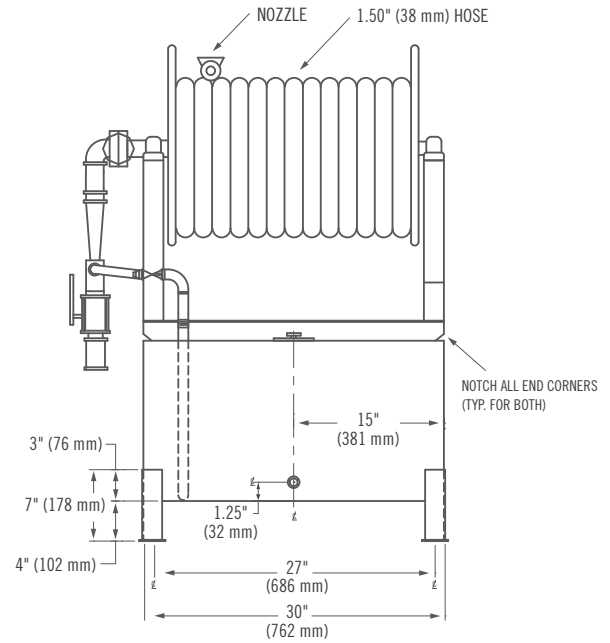
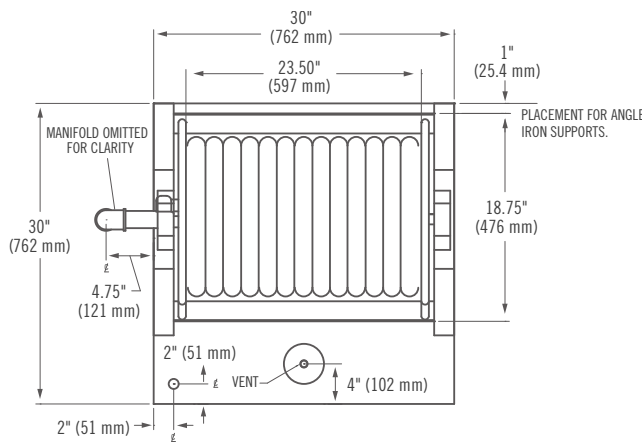
Options

- 15 m (50'), 23 m (75'), 38 m (125') or 46 m (150') hose lengths
- 227 litre (60 gallon) concentrate tank
- 316SS, galvanized or carbon steel manifold
- Handline Nozzle
- Stainless steel (316) tank material
- Stainless steel, aluminum or carbon steel hose reel

Solberg is a member of THE AMEREX GROUP, an alliance of independent companies with a singular purpose: revolutionize the course of fire suppression technology with safer, more effective, and more sustainable solutions. Together, we are Moving Industries Forward by Redefining Fire Suppression. www.solbergfoam.com

Dimensional Information (standard unit)

Height: 1168 mm (46")
 Length: 1270 mm (50")
 Width: 889 mm (35")
 Weight with foam: 35 gallon station 181 kg (400 lbs)
 60 gallon station 282 kg (622 lbs)



Ordering Information

FOAM STATIONS

PART NO.	DESCRIPTION	APPROXIMATE SHIPPING WEIGHT	
		kg	lb
35002	Foam Station – 133 litre (35 gallon), Stainless Steel, Hose Reel, Nozzle, Hose 75' (23 m), Red Enamel Finish	59 kg	130 lb
35003	Foam Station - 133 litre (35 gallon), Stainless Steel, Hose Reel, Nozzle, Hose 100' (30 m), Red Enamel Finish	59 kg	130 lb
35004	Foam Station - 227 litre (60 gallon), Stainless Steel, Hose Reel, Nozzle, Hose 75' (23 m), Red Enamel Finish	73 kg	160 lb
35005	Foam Station - 227 litre (60 gallon), Stainless Steel, Hose Reel, Nozzle, Hose 100' (30 m), Red Enamel Finish	73 kg	160 lb